

ImBatch Quick Start Guide



Contents

1 Introduction to ImBatch.....	3
2 Downloading ImBatch.....	4
3 Installing ImBatch.....	8
4 Working with ImBatch.....	19
4.1 Starting ImBatch.....	19
4.2 Working with ImBatch.....	21
4.3 Adding images to ImBatch.....	23
4.4 Manipulating with images.....	26
4.5 Adding tasks.....	27
5 How to batch.....	28

1 Introduction to ImBatch

ImBatch – is a great user friendly and totally free image batch processor, that lets you modify multiple images, all in one go.

This guide will lead you through the process of downloading, installing and configuring ImBatch. This guide was written to be as clear as possible and to provide only the details to get you up and running with ImBatch.

2 Downloading ImBatch



Picture 1

1. Point your browser to:

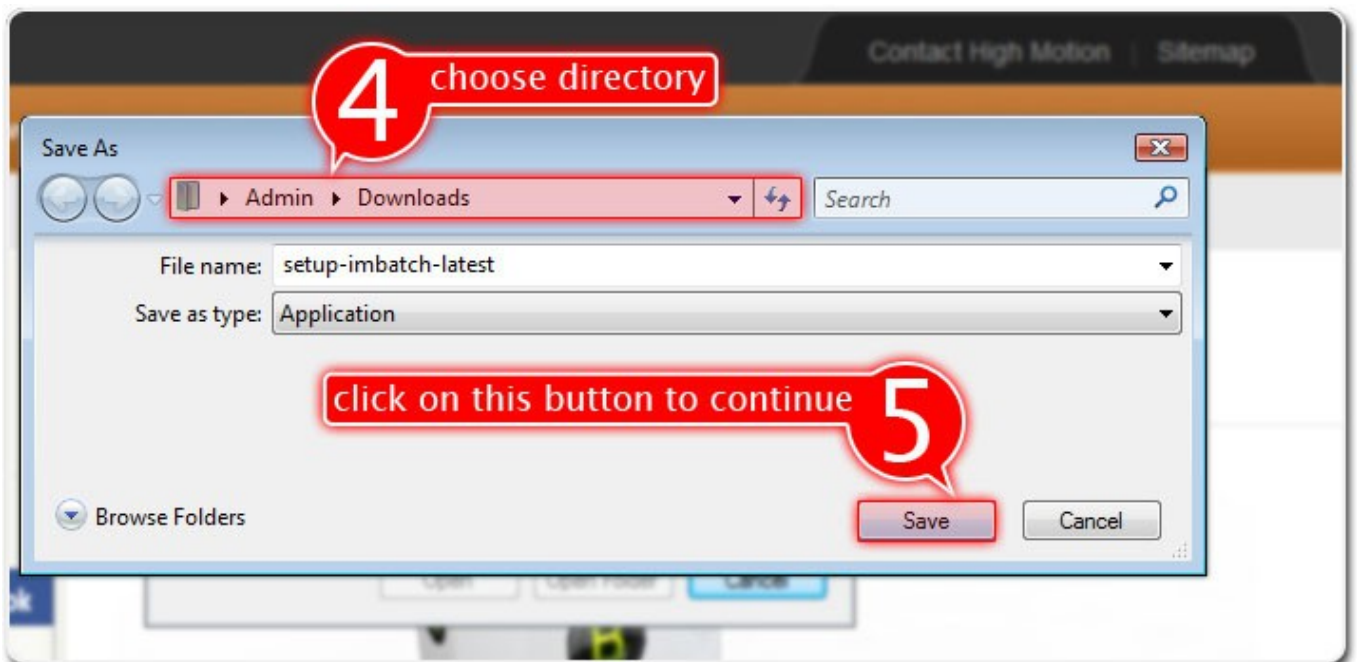
<http://www.highmotionsoftware.com/products/imbatch>, by typing this address into your browser's address bar and pressing **Enter** button on your keyboard.

2. Click on '**Download**' button, as shown on *Picture 1*, to download the latest version of ImBatch.



Picture 2

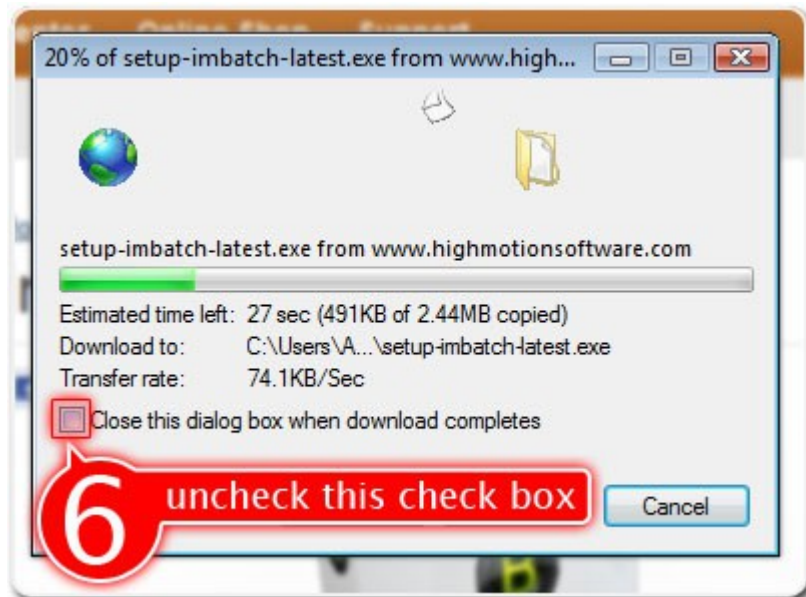
3. Click on '**Save**' button, as shown on *Picture 2*, to save the installation file.



Picture 3

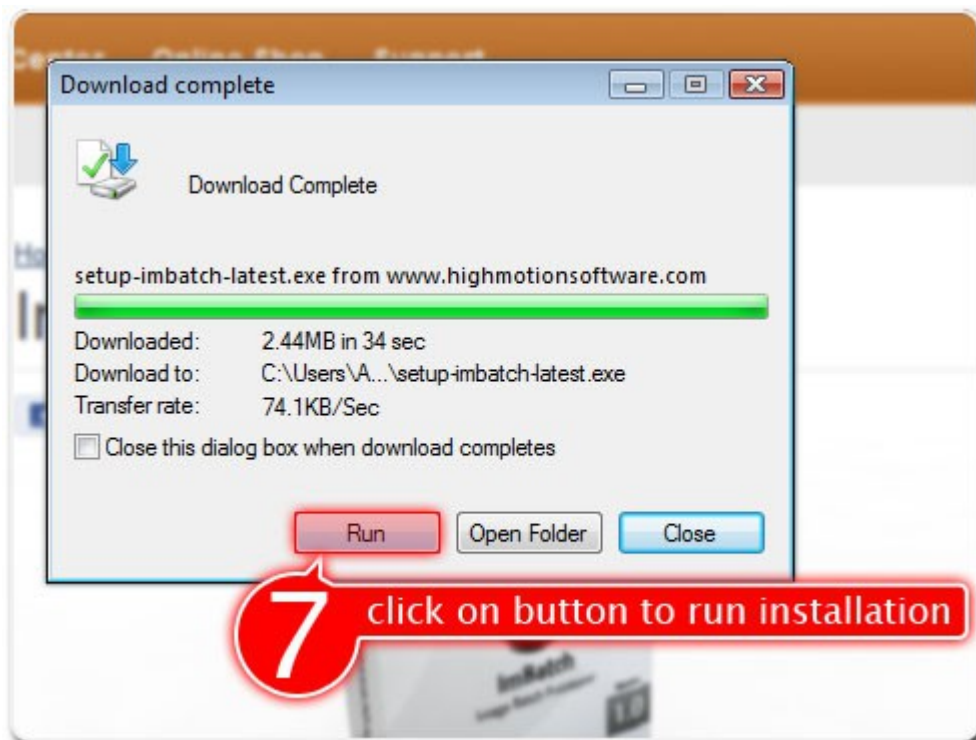
4. Choose directory, where to save the installation file.

5. After this, click on '**Save**' to continue downloading process.



Picture 4

6. Next dialog shows you downloading statistics. Uncheck check box, shown on *Picture 4*, to prevent closing this dialog box, when download finished.



Picture 5

7. When download process completes, click on this button (*Picture 5*) to start the installation process.

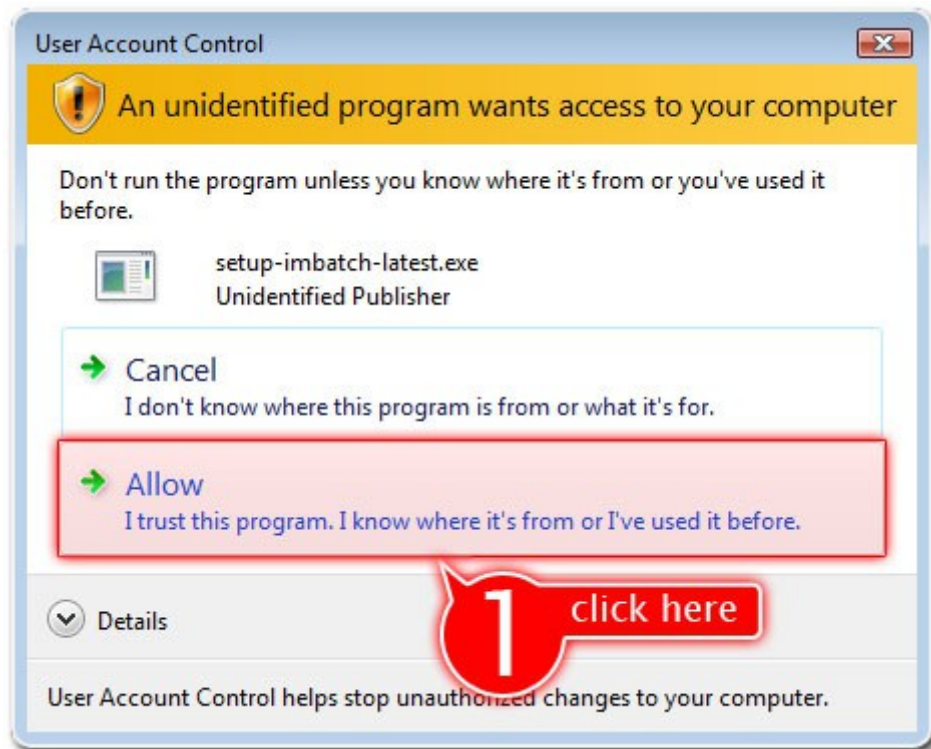


Picture 6

8. Sometimes, according to your security settings, you may see this dialog box or similar (*Picture 6*). This happens so, because the installation file has not a digital signature. This signature costs money, that is expensive for the FREE program. So, just click on '**Run**' button to start installation process.

3 Installing ImBatch

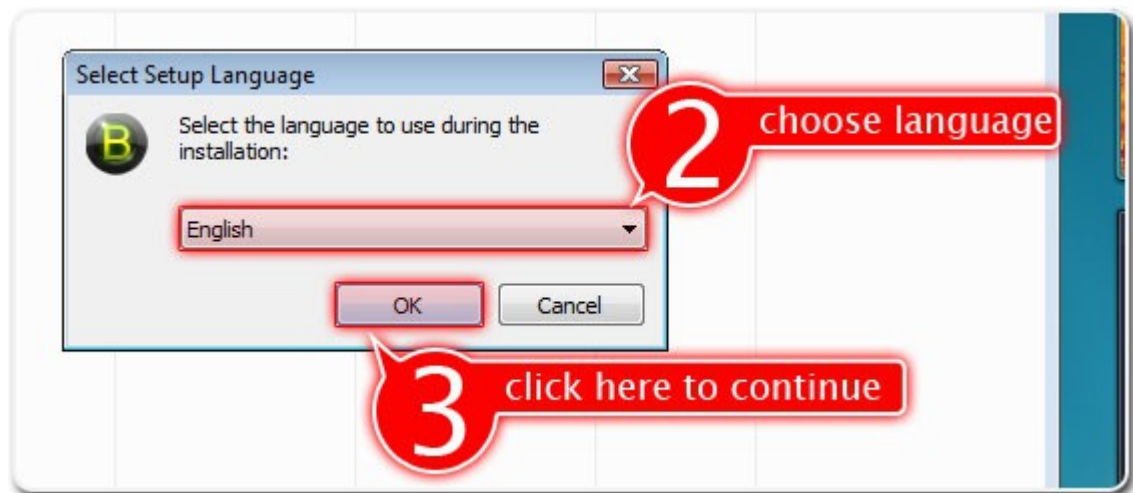
Sometimes, according to your system security settings, you may see this (*Picture 7*) UAC dialog box.



Picture 7

1. In this case, to continue installation process, click on 'Allow' button as shown on *Picture 7*.

Then the installation process begins and you will see this (*Picture 8*) dialog box. This dialog asks you to choose your preferred language.



Picture 8

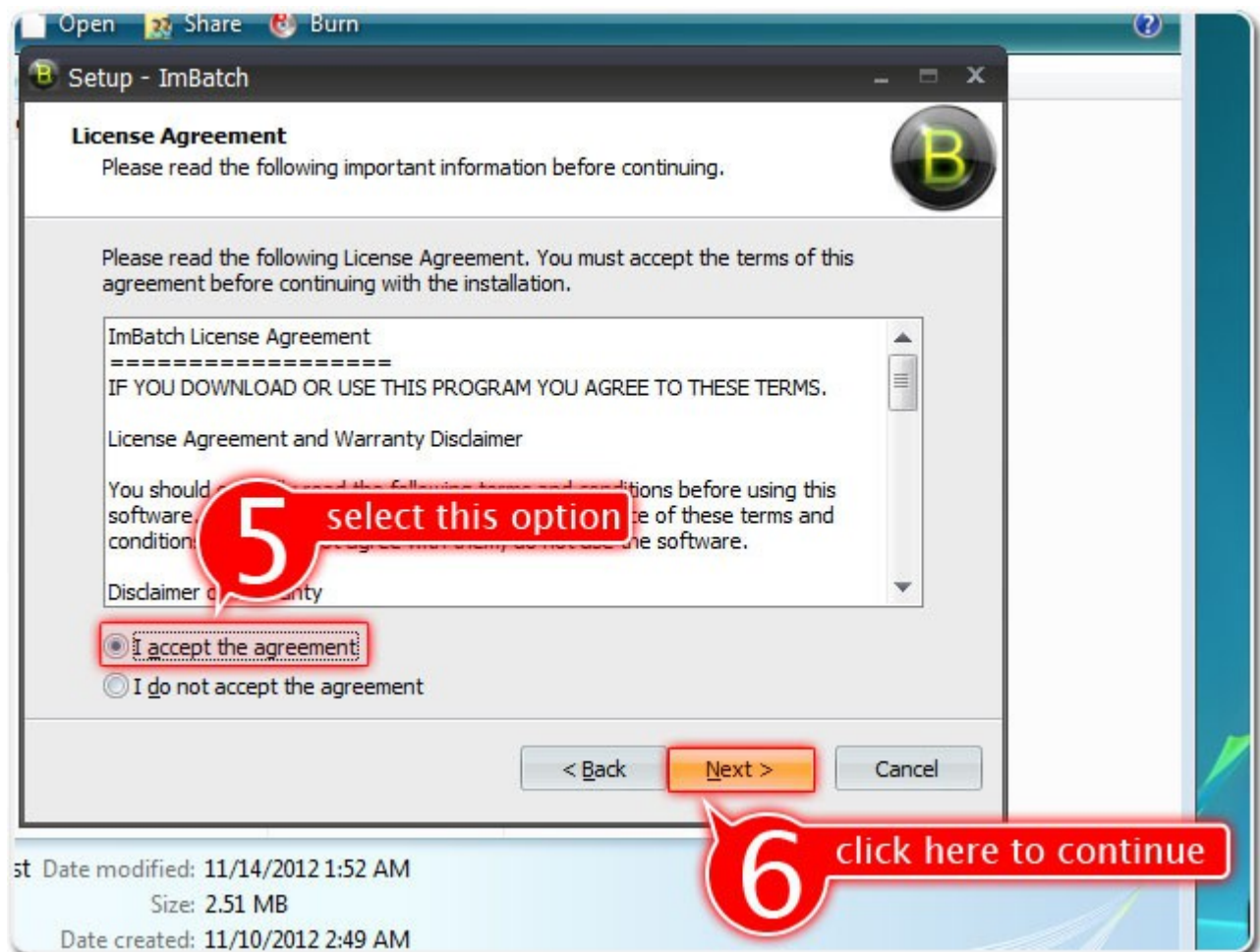
2. So choose your language from combo box.
3. Then click on 'OK' button to proceed installation.



Picture 9

Next you will see the 'Welcome Screen'.

4. Click on 'Next' button to continue installation.

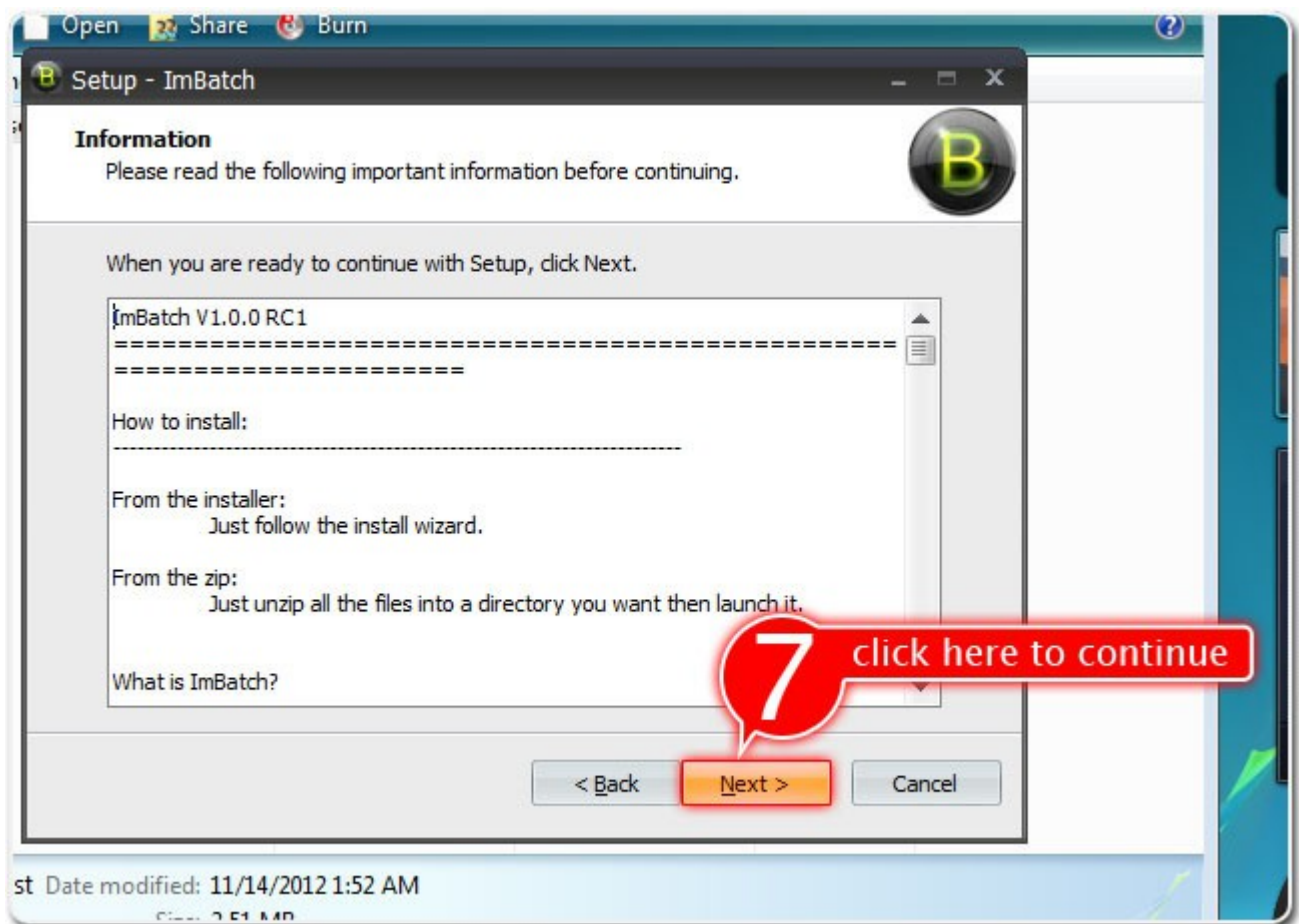


Picture 10

Then you will see 'License Agreement' window (*Picture 10*). You must carefully read license.

5. After this, if you accept with this license and want to continue installation, select option 'I accept the agreement'.

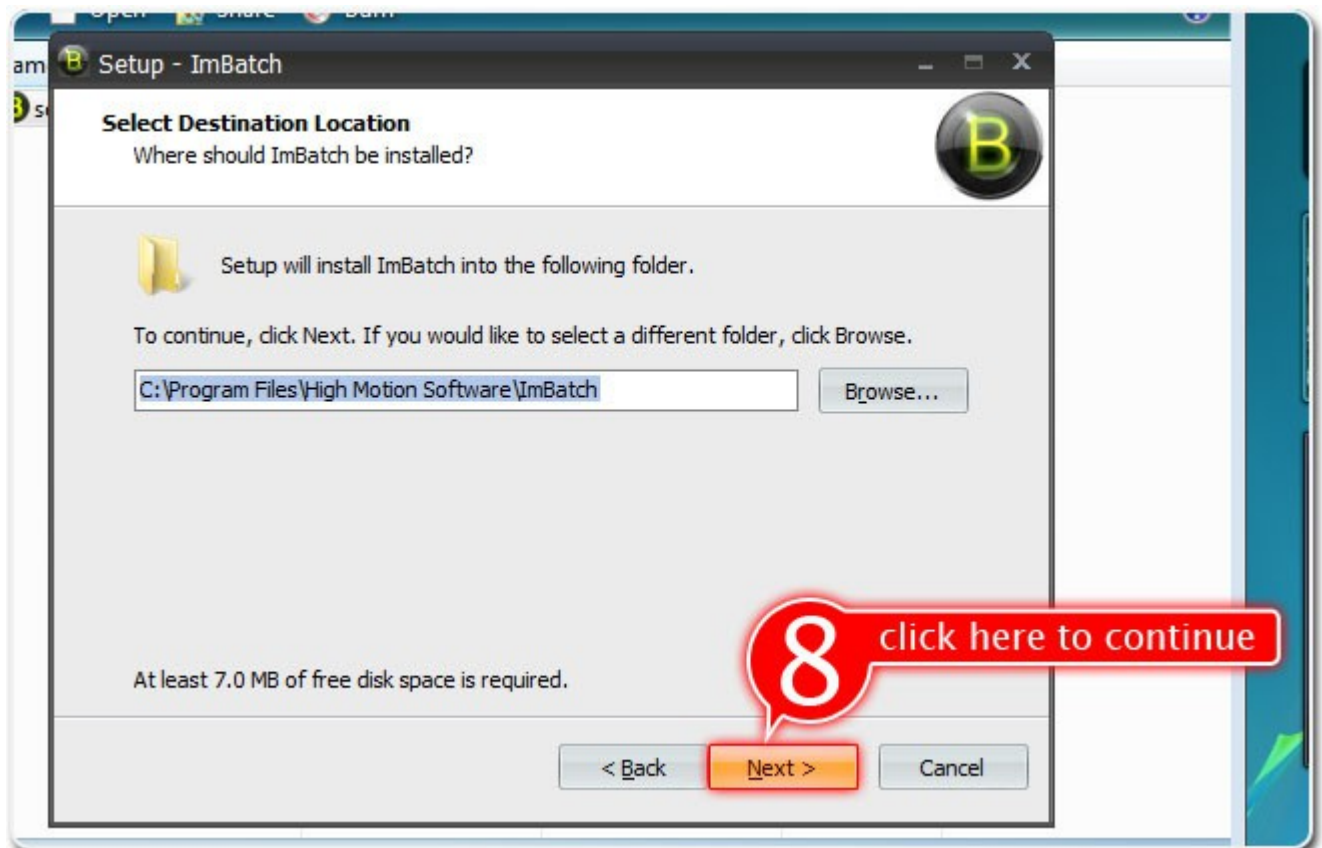
6. Then click on 'Next' button.



Picture 11

This is 'Information' window. Here you can read basic information according ImBatch.

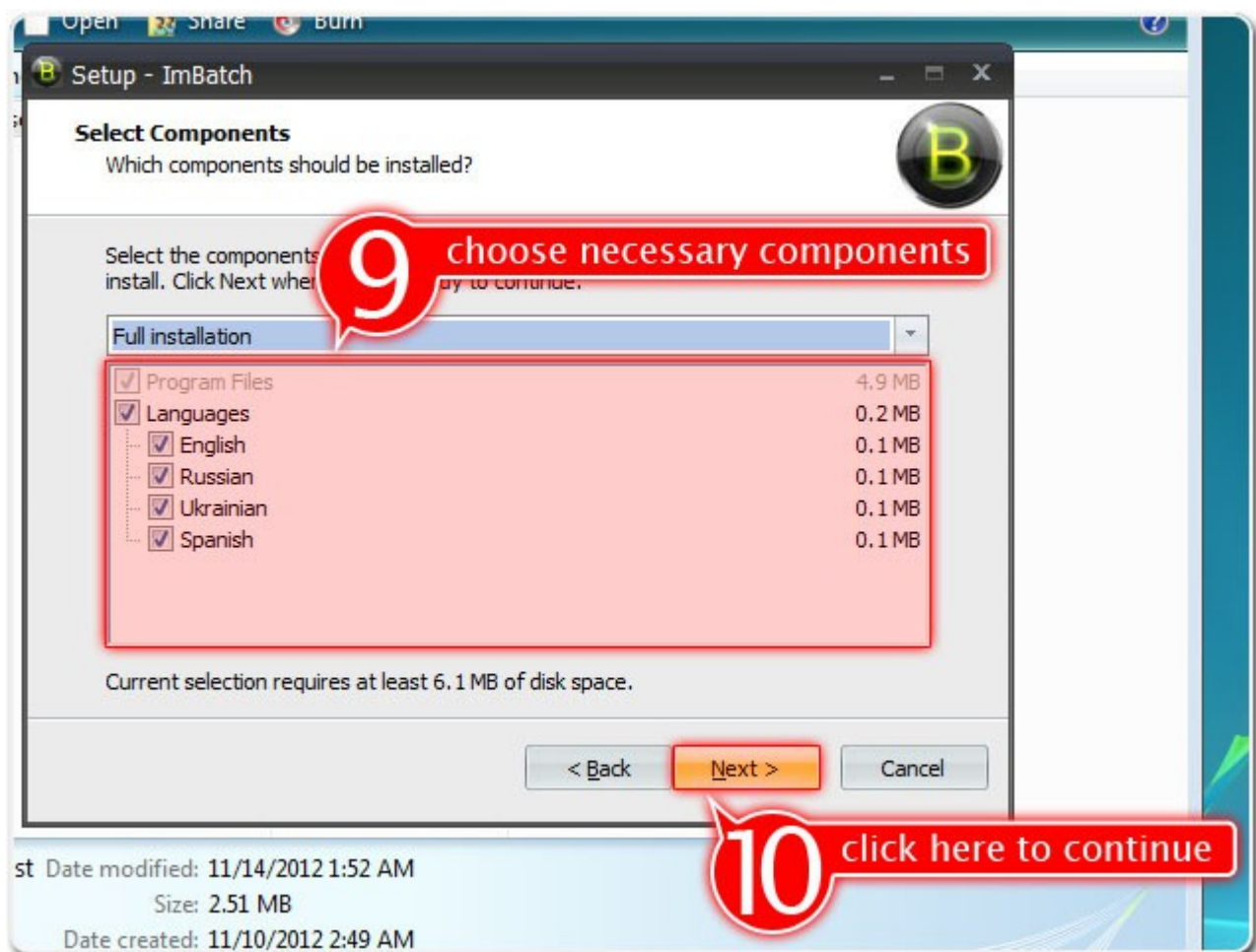
7. Click on 'Next' button to continue installation.



Picture 12

Here you can see dialog box, where you can choose folder, where to install ImBatch.

8. After all changes, click on '**Next**' button.

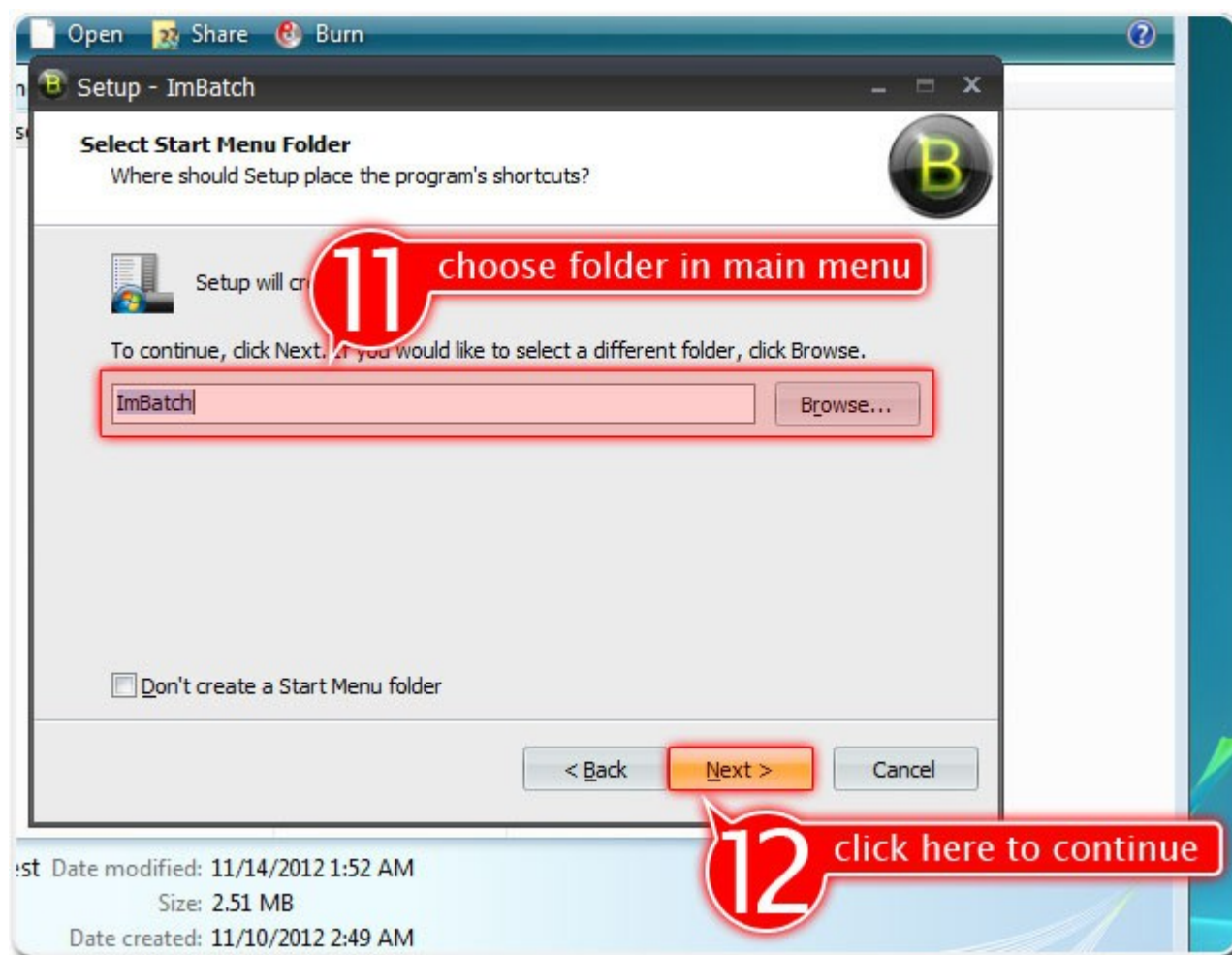


Picture 13

On the next screen you can select necessary components.

9. Choose components, you want (for example, ImBatch localization).

10. Click on the '**Next**' button to continue installation.

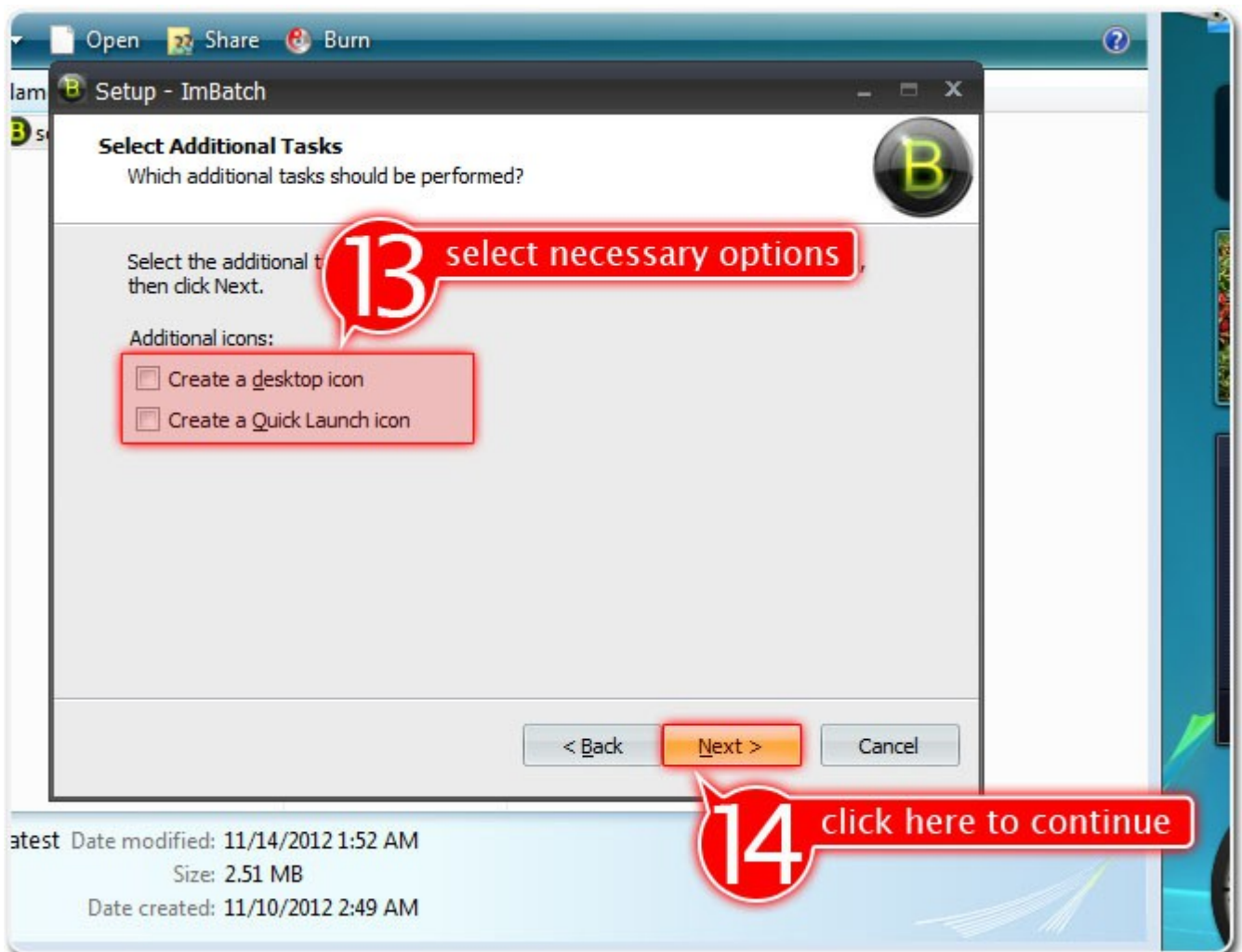


Picture 14

Next you will see dialog box (*Picture 14*), where you can choose folder in start menu where to install ImBatch.

11. Choose start menu folder you want or leave it in default state.

12. Click on '**Next**' button to continue.

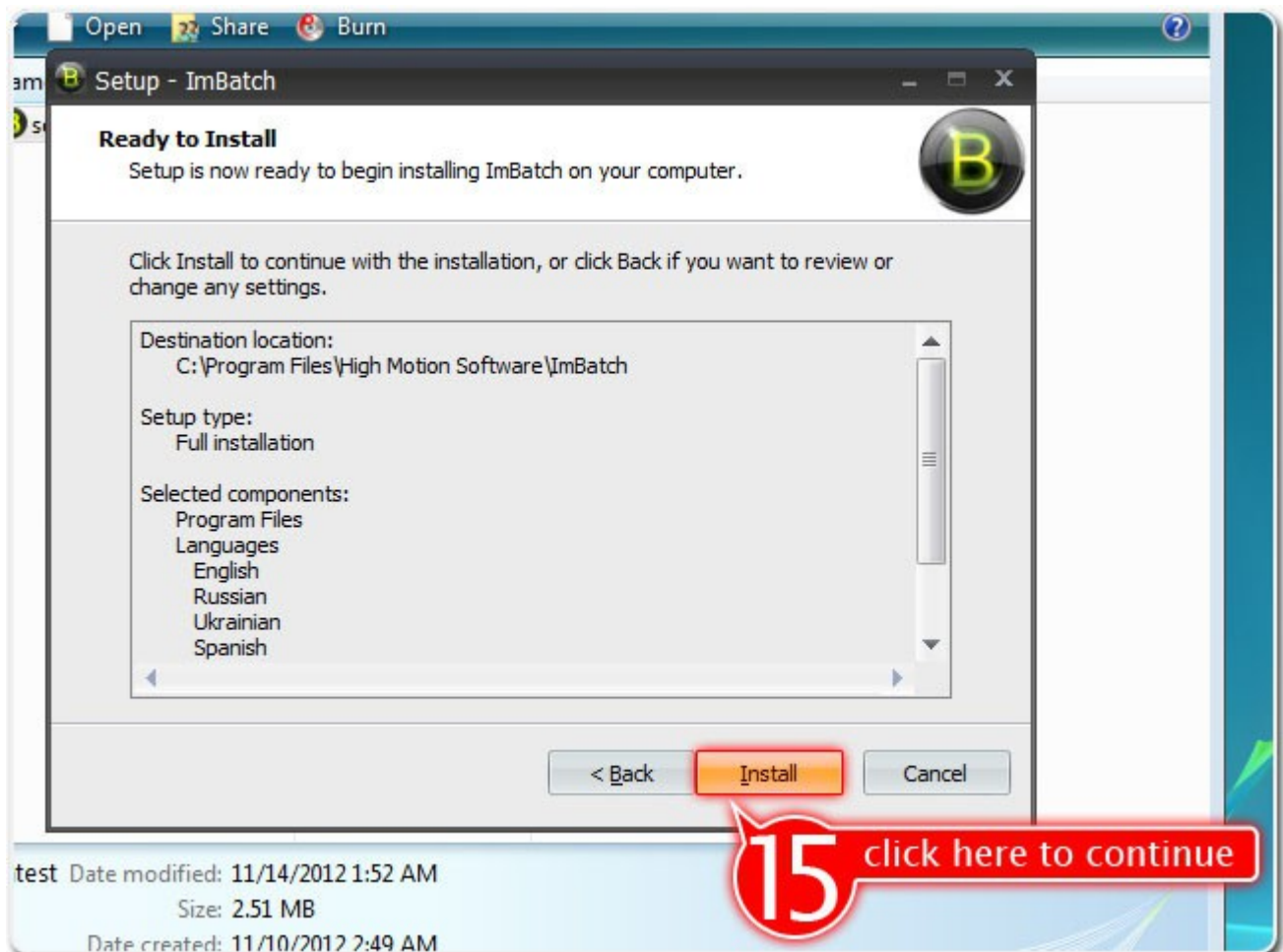


Picture 15

On current dialog window (*Picture 15*) you can choose additional launch icons for desktop and Quick Launch bar.

13. So choose additional icons you want.

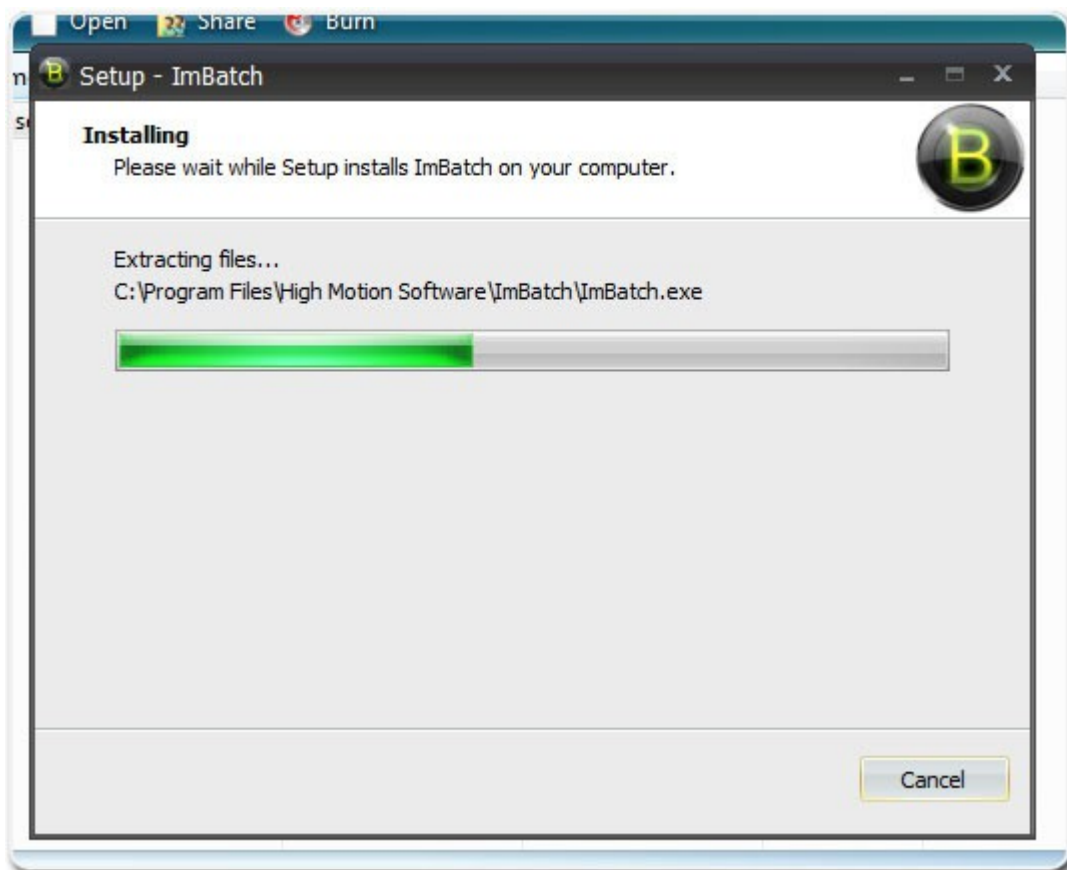
14. Click on 'Next' button to continue.



Picture 16

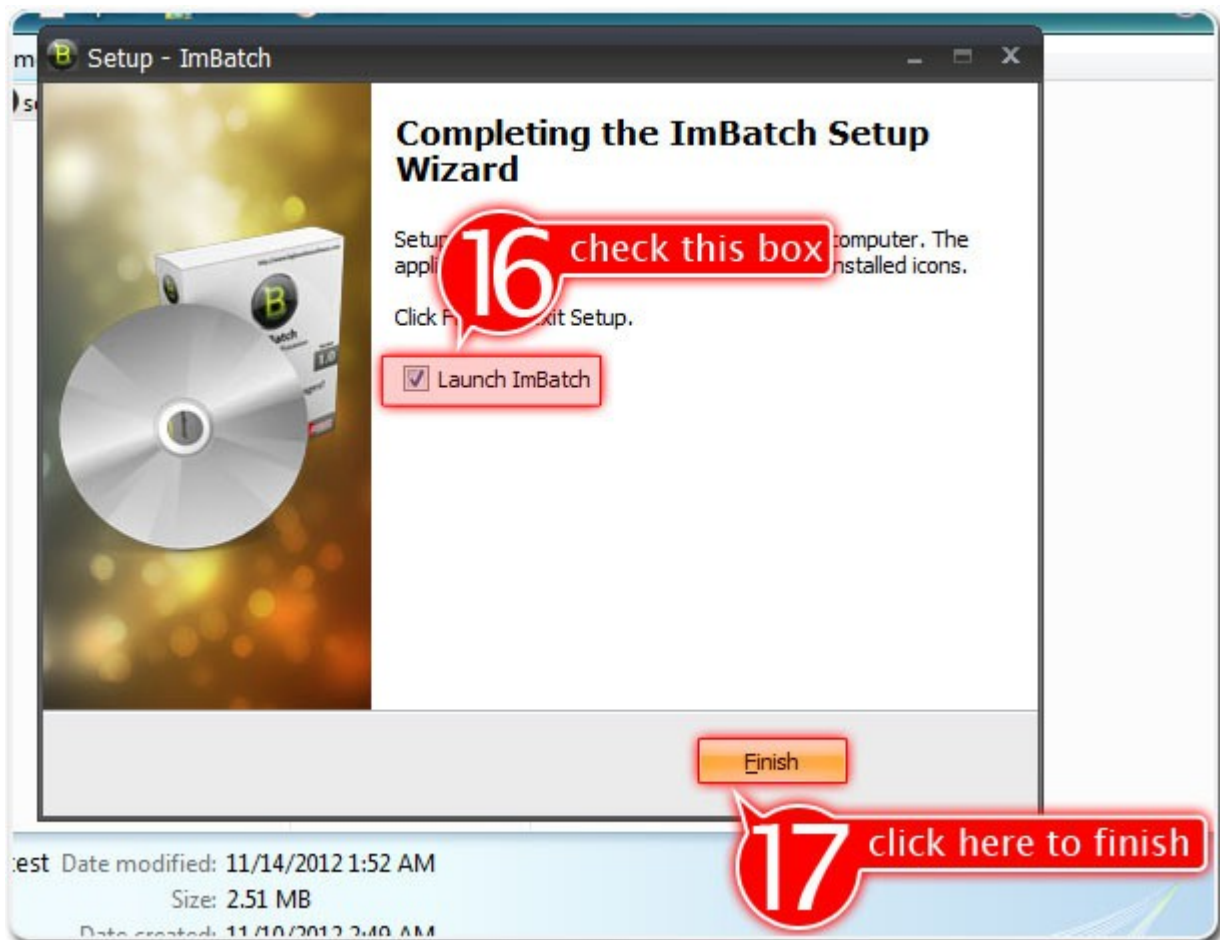
Next you can see summary of your installation process. If you forgot make some changes, it's a time to go back, by clicking on '**Back**' button, to necessary dialog window and do it.

15. If all right, than click on '**Install**' button to start installation.



Picture 17

If you clicked on 'Install' button on previous dialog window, than next you will see the installing progress (*Picture 17*). In any time you can click on 'Cancel' button to rollback any changes made by installation.



Picture 17

When installation completes, you will window shown on *Picture 17*.

16. Leave checked check box '**Launch ImBatch**' to run ImBatch, when setup program will closed.

17. Click on '**Finish**' button to complete installation.

4 Working with ImBatch

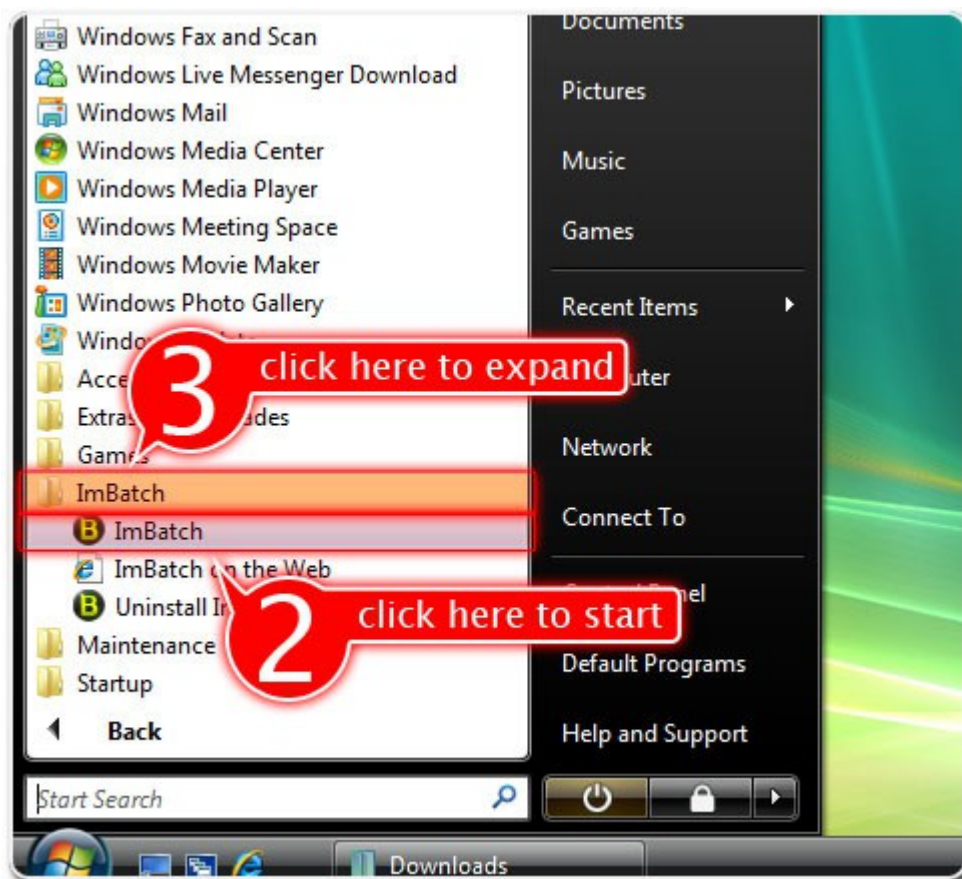
4.1 Starting ImBatch

If you don't know how to run just installed software, then do following.



Picture 19

1. First click on Windows Start button.
2. Then click on 'All Programs' button.

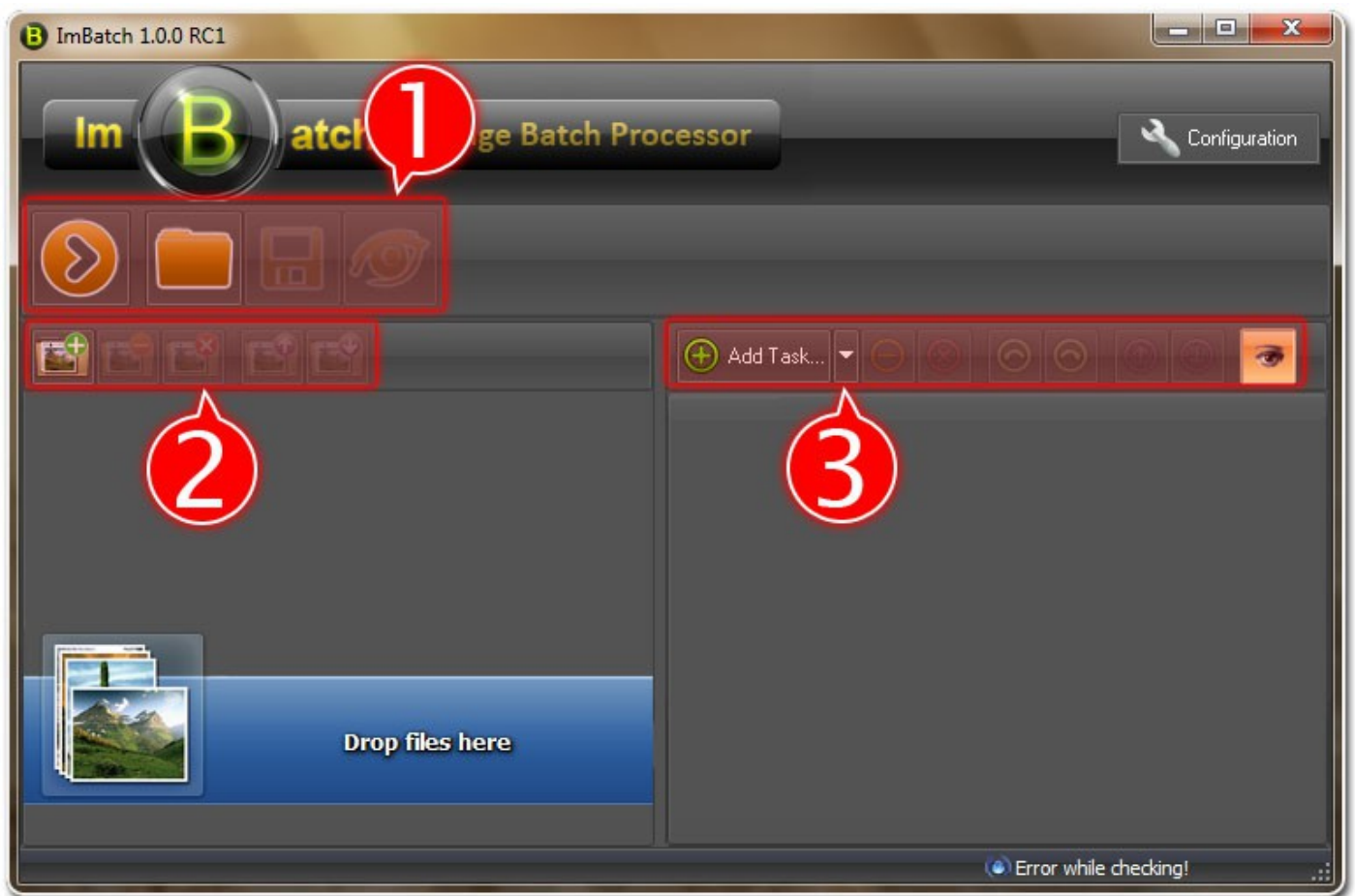


Picture 20

3. Then click on '**ImBatch**' folder to expand it.
4. Next click on '**ImBatch**' link to run ImBatch.

4.2 Working with ImBatch

On *Picture 21* you can see ImBatch main window.



Picture 21

1. 'Main' toolbar. Here you can see buttons to run tasks (⏮), save them to the file (💾), load from file (📁) and to show preview dialog box (👁).

2. 'Images' toolbar, where you can see buttons to add (📁+), delete (📁-), clear (delete all) images (📁X) from image list. Also there are buttons to move images up (📁↑) and down (📁↓) in the list.

3. 'Tasks' toolbar lets you add (⊕), remove (⊖), clear (remove all) tasks (⊗). Also here you can see buttons to

undo (↶) or redo (↷) any actions made with tasks. Also you can move tasks up (⬆) or down (⬇) to change their priority. And the last button (👁) is to hide unnecessary task parameters.



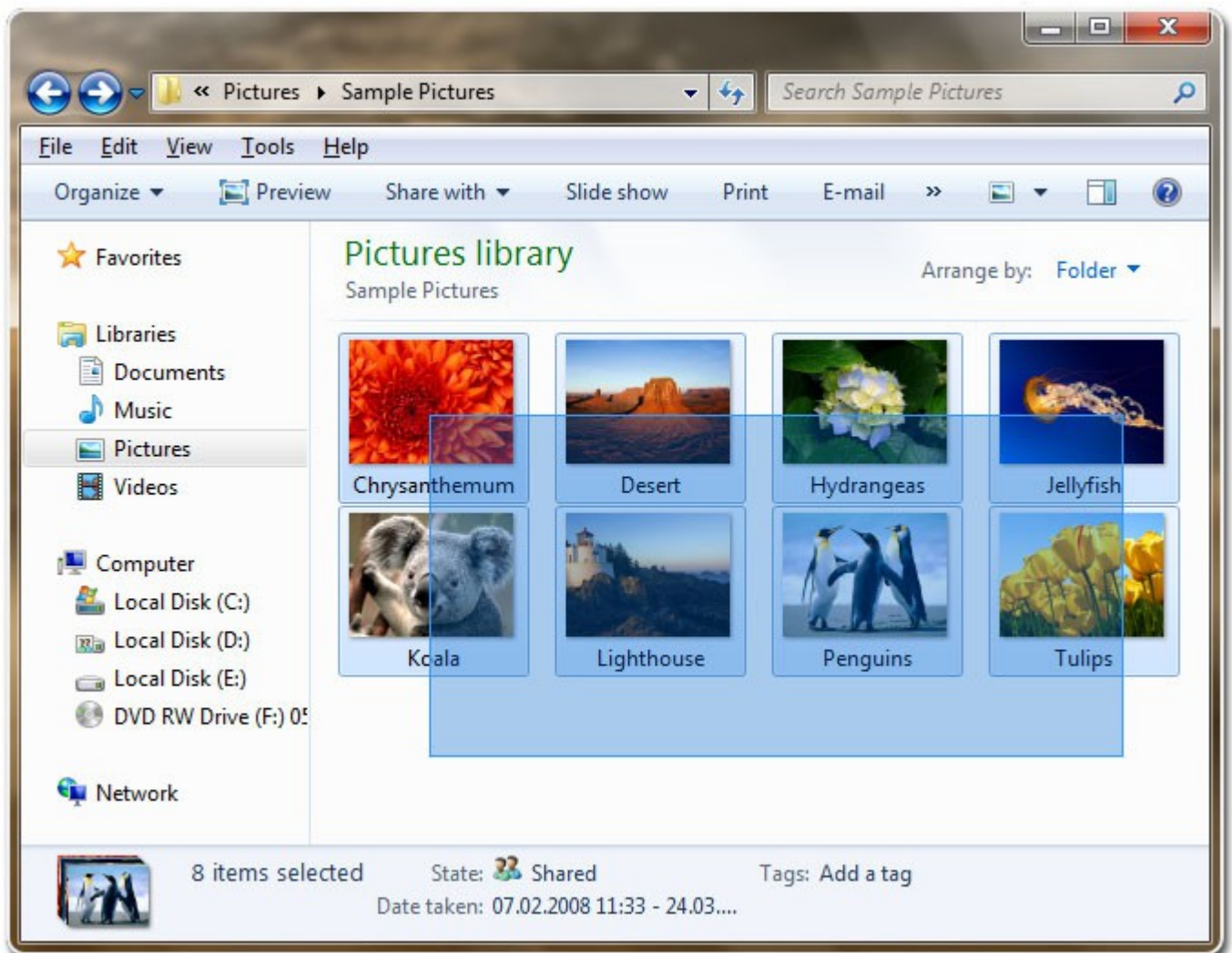
To hide some not important task parameters just uncheck (☐) them (a small check box (☑) to the left of parameter) and turn off (👁) parameters visibility.

To show previously hidet items, turn on (👁) this button.

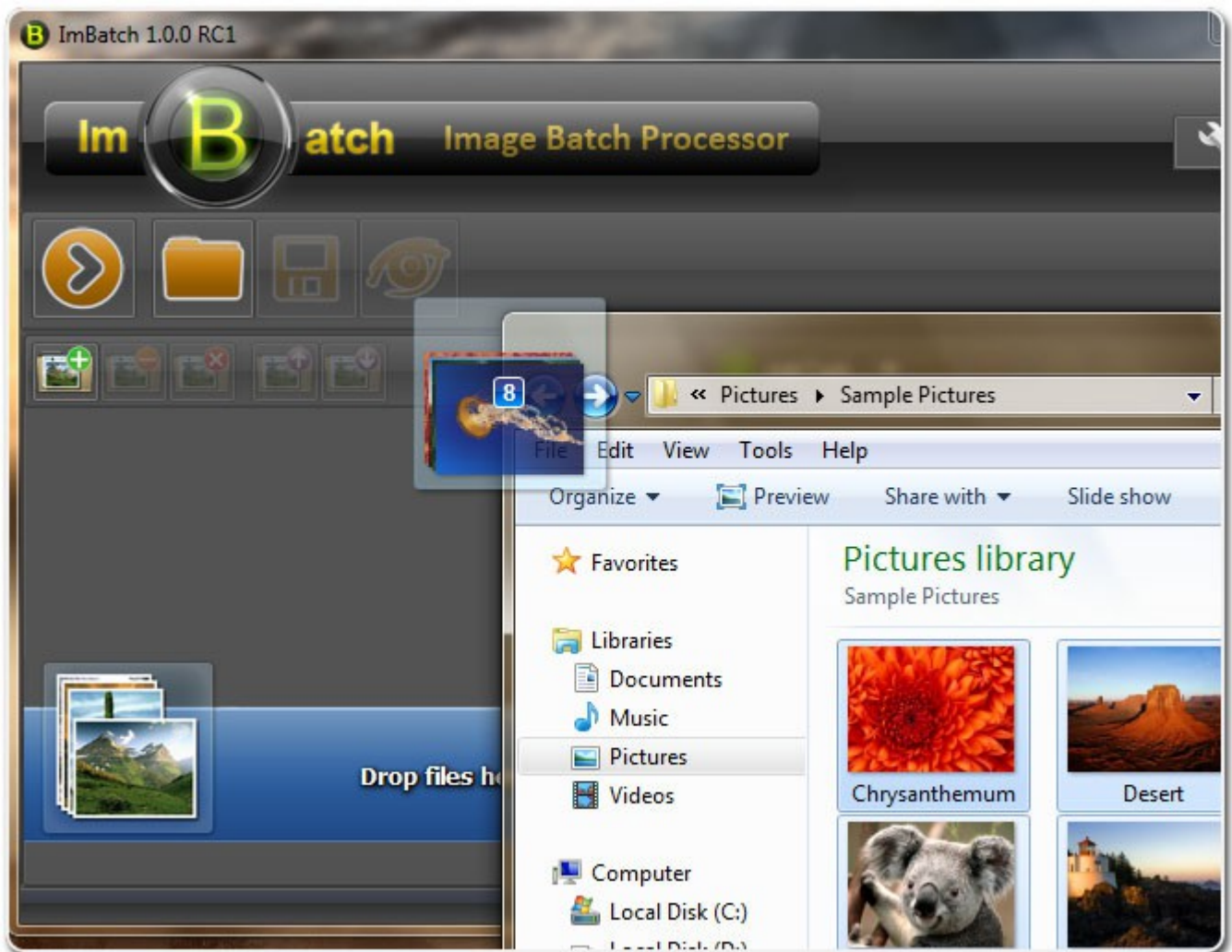
4.3 Adding images to ImBatch

There are two methods to add images for processing:

1. Open Windows Explorer and navigate to the folder with images. Then select images you want to add (*Picture 22*). After that drag selected images into the ImBatch (*Picture 23*).

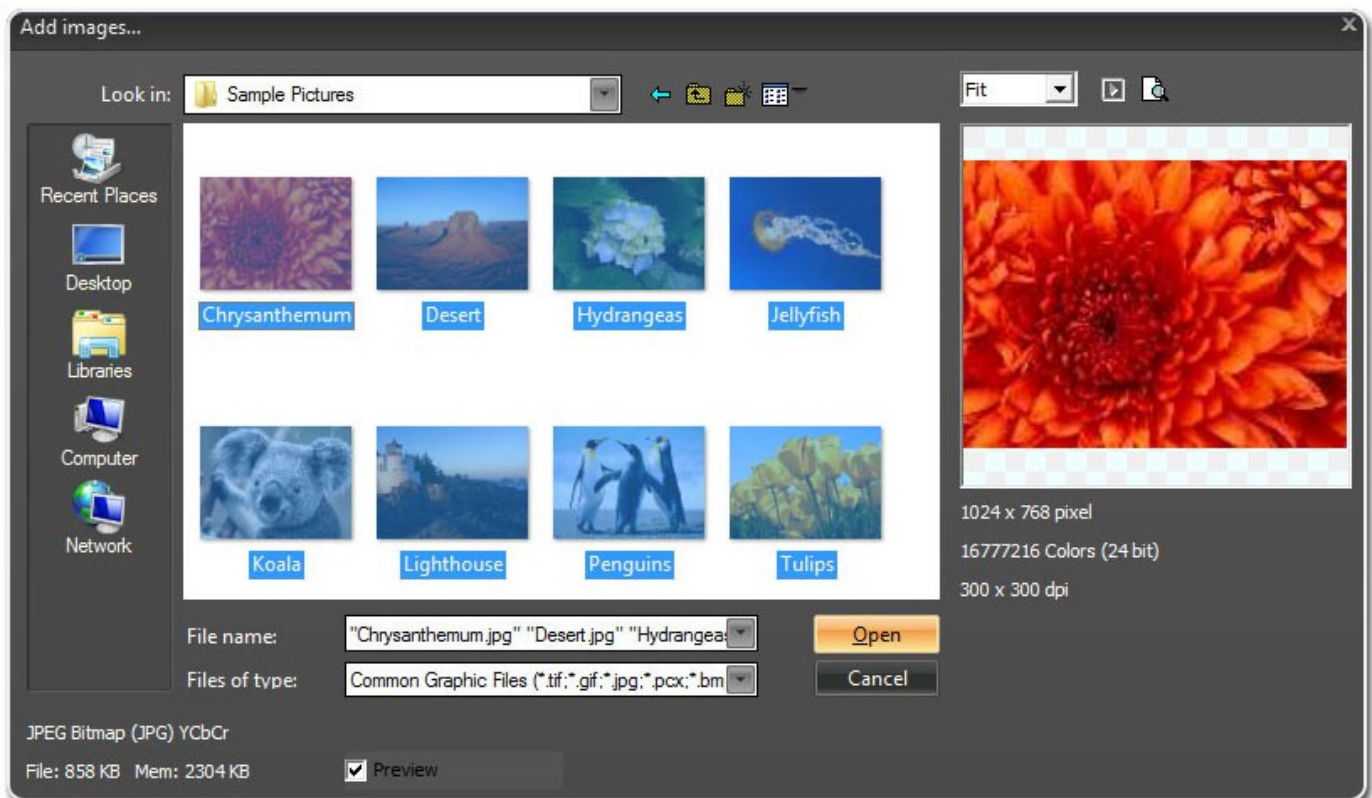


Picture 22







Picture 23

2. Click on add images button (📁+) on 'Images' toolbar. After that 'Add images...' dialog box will appear. So navigate to the folder with images, select images you want to add and click on 'Open' button (*Picture 24*).



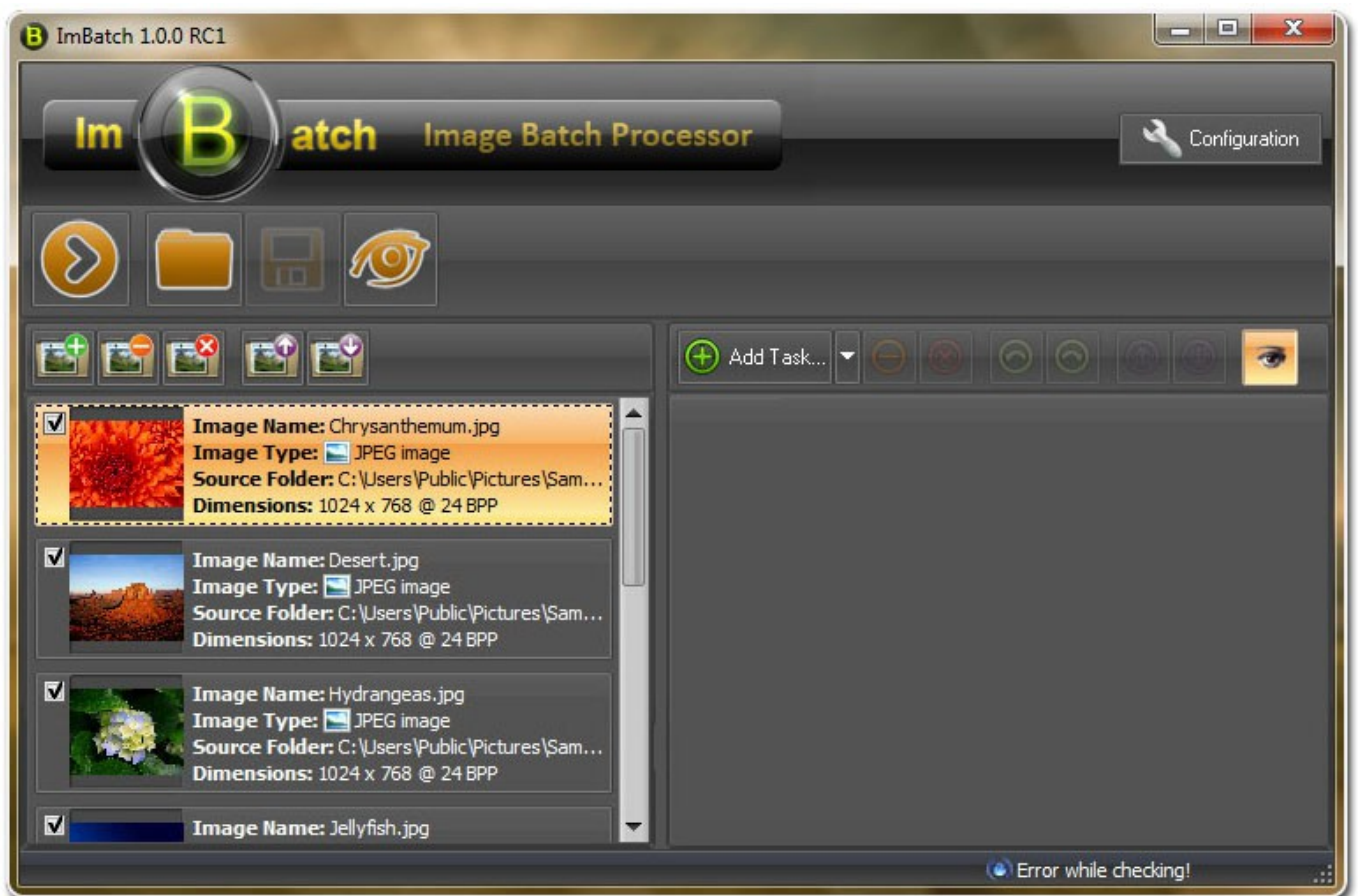
Picture 24

4.4 Manipulating with images

When images are added to ImBatch you can manipulate with them (*Picture 25*): remove unnecessary images from the list ( – remove only selected,  – remove all), move up () or down () in processing queue using command buttons on 'Images' toolbar and exclude from this queue.



To exclude images from processing queue just select images, you want to exclude, on the images list panel and uncheck them by pressing on check box (☒).




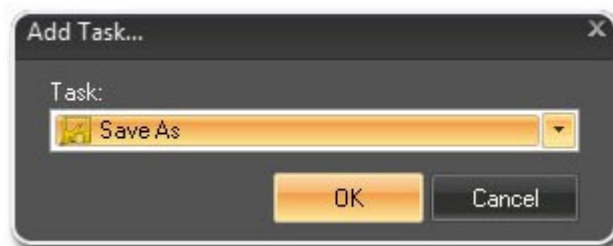
Picture 25

4.5 Adding tasks


Now it's time to add tasks for processing. But first remember one note: **the last active task in the tasks list must be one that saves all changes on disk ('Save As' or 'Add to PDF')**. But ImBatch will always remind you about that, if you will forget.

Now, to add new task, you have two ways:

1. Click on '**Add Task...**' button ( Add Task...) on the '**Tasks**' toolbar. Than '**Add Task...**' dialog box will appear (*Picture 26*). Select task you want to add from '**Task**' combo box and press on '**OK**' button.




Picture 26

2. Click on little white upturned triangle () near the '**Add Task**' button. Then menu with list of all task will appear, so click on task you want to add.

5 How to batch

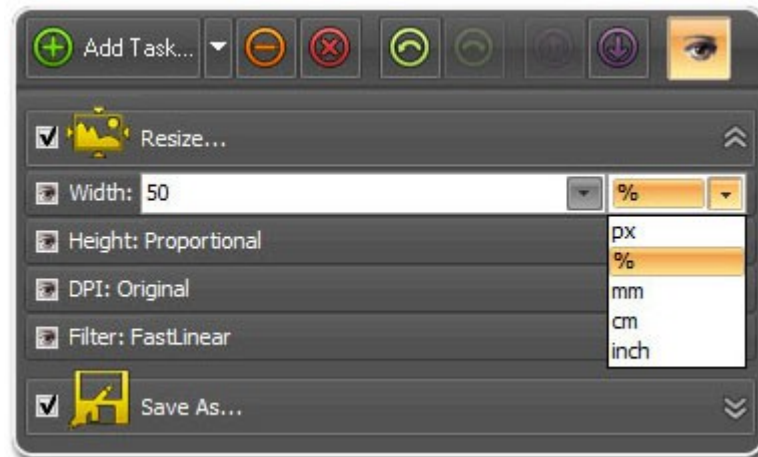
To clearly understand how to work with ImBatch, let's configure it to resize all images to half of their sizes and convert them to PNG format.

So add two tasks – '**Resize**' and '**Save As**', using one of the methods, described in previous chapter. Now expand '**Resize**' task to see all its parameters by pressing on  button on the left side of task's header. Now you will see all parameters of '**Resize**' task (*Picture 27*).



Picture 27


Now edit '**Width**' parameter by double-clicking on it. When you are in edit mode, type '**50**' into the first edit field and select '**%**' from the next combo box (*Picture 28*).

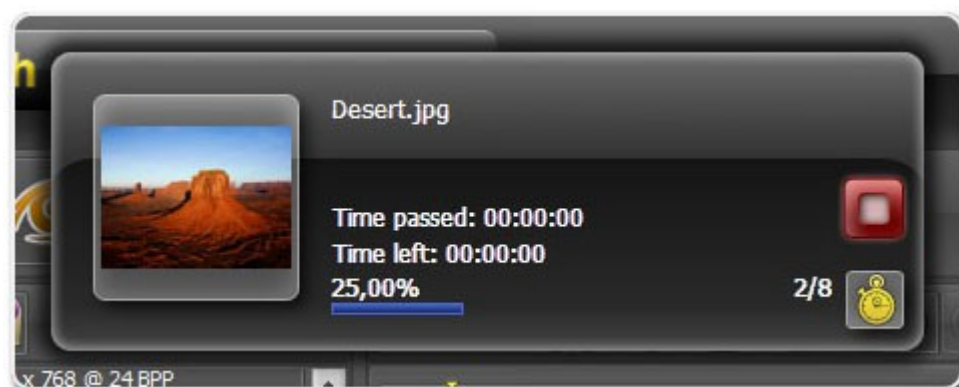


Picture 28

Make the same changes for the '**Height**' parameter.


Next expand '**Save As**' task and find '**File Type**' parameter. Edit it by double-clicking on it and choose '**PNG**' item from the combo box. You can also change destination folder, where all images will be saved, by editing '**Folder**' parameter of '**Save As**' task. By default, it is source folder of added images.

When all changes are made, you can run tasks by pressing on  button. Then processing process will begin and you will see information dialog box (*Picture 29*).



Picture 29

On this dialog box you can see information about currently processed image, time passed and left to the

end of batching and other. If you want to stop image processing, you can click on  button.